

# Mobile Water Services

## G3RO-75



BASIN WATER RESOURCES

### Equipment and Service Summary

Basin Water Resources provides trailer-mounted Reverse Osmosis (RO) systems. Each self-contained trailer includes chemical treatment pumps, cartridge filters, and a single pass RO system. All systems contain instrumentation and equipment for automatic operations including remote monitoring capabilities.

Our asset monitoring solution includes access to BasinWaterLogix™. This cloud-based remote monitoring and data acquisition system is designed to enhance the customer experience with provider water treatment systems.

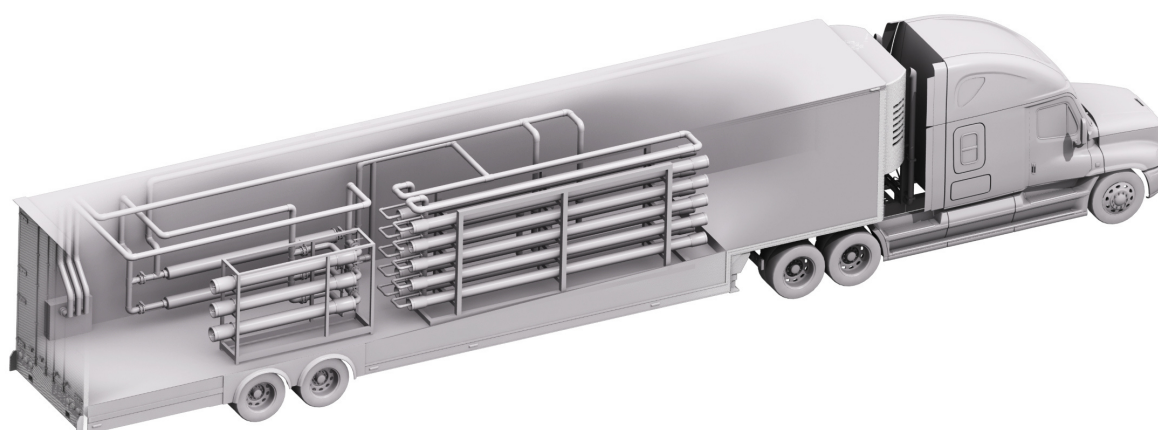
The trailer includes the following: 3x2 array, 5M vessels, single pass operation, VFDs for booster pump, auto-reject valve, an oversized HMI touch screen, and remote communications/control via cell phone modem.

### Ancillary Equipment

We offer a full range of support equipment and accessories as part of our turnkey ready-to-operate option. This includes booster pumps, pre-treatment, hoses, tanks, cleaning systems, and consumables.

### Instrumentation

Pressure Transmitters  
PSI Gauges  
Flow Meters  
pH/ORP/Conductivity  
PLC/HMI  
Remote Communication



## Utility Requirements:

Mobile RO Trailer				
Plumbing	All tie-ins will be made at Cam-Lock connections. The trailer has one train for a total permeate capacity of approximately 75 GPM nominal flow (assuming 75% recovery).			
Service	Qty	Size and Description	Pressure (PSI)	Flow per train (GPM)
Feed	1	3" SS Camlock	40-80	75-120
Product	1	3" SS Camlock	5-30	50-75
Reject*	1	3" SS Camlock	25 < Feed PSI	20-40

**\*Exact Tie-in sizes should be confirmed prior to shipment of unit**

Electrical	Terminated at the Main Trailer Connection			
Service	Qty	Size and Description	Voltage	Max Amps
RO Trailer Supply Power*	1	60Hz/3 Phase	480	100

**\*Recommended operating footprint L x W = 60' x 12' Actual = 53' x 8.5'**