

Mobile Water Services

G3RO-300



BASIN WATER RESOURCES

Equipment and Service Summary

Basin Water Resources provides trailer-mounted Reverse Osmosis (RO) systems. Each self-contained trailer includes chemical treatment pumps, high-capacity cartridge filters, and a dual single pass or double pass RO. All systems contain instrumentation and equipment for automatic operations including remote monitoring capabilities.

Our asset monitoring solution includes access to BasinWaterLogix™. This cloud-based remote monitoring and data acquisition system is designed to enhance the customer experience with provider water treatment systems.

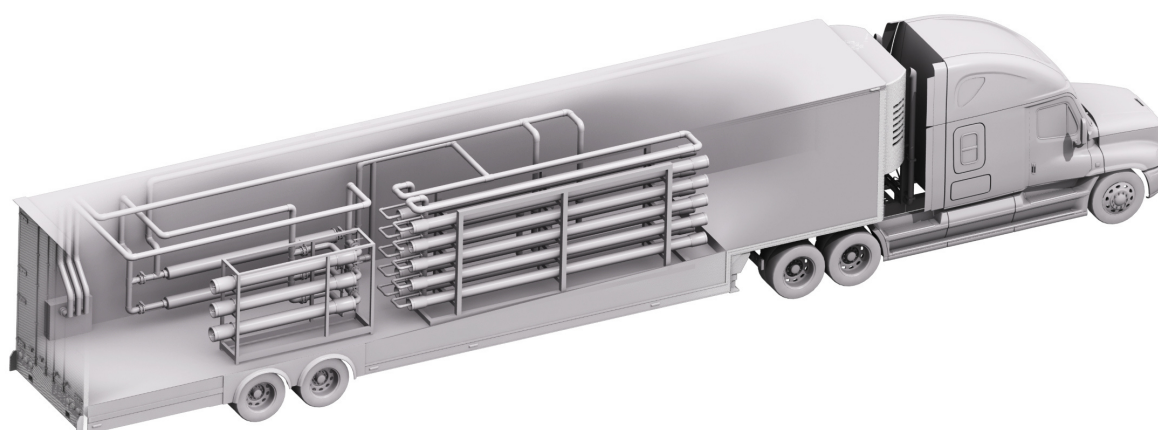
The trailer includes the following: 3x2 array, 6M vessels, dual single pass or double pass operation, VFDs for booster pumps, auto-reject valves, an oversized HMI touch screen, and remote communications/control via cell phone modem.

Ancillary Equipment

We offer a full range of support equipment and accessories as part of our Turnkey ready-to-operate option. This includes booster pumps, pre-treatment, hoses, tanks, cleaning systems, and consumables.

Instrumentation

Pressure Transmitters
PSI Gauges
Flow Meters
pH/ORP/Conductivity
PLC/HMI
Remote Communication



Utility Requirements:

Mobile RO Trailer				
Plumbing	All tie-ins will be made at the flanged piping box. The trailer has two trains for a total permeate capacity of approximately 250-300 GPM (assuming 75% recovery) single pass or 110-125 GPM double pass.			
Service	Qty	Size and Description	Pressure (PSI)	Flow per train (GPM)
Feed	1	4" SS 150# Flange	40-90	160-180
Product	1	4" SS 150# Flange	5-30	125
Reject*	1	4" SS 150# Flange	25 < Feed PSI	30-50
Permeate Flush (Optional)	1	2" SS 150# Flange	40	20-60

***Exact Tie-in sizes should be confirmed prior to shipment of unit**

Electrical	Terminated at the Main Trailer Connection			
Service	Qty	Size and Description	Voltage	Max Amps
RO Trailer Supply Power*	1	60Hz/3 Phase	480	150